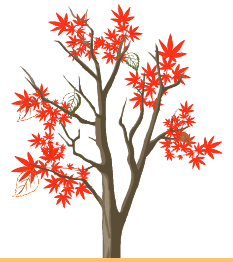




Gifu Crossroads



Gifu Prefecture Tourism and Event Newsletter

Autumn 2011; Vol. 13

A warm and hearty welcome to Gifu!

Located precisely in the center of Japan, Gifu Prefecture is the "heartland" of the country in more ways than one. Of course, its geographic location places it within easy reach of the major metropolises of Japan. But more importantly, many old traditions are kept alive here in the midst of beautiful, natural surroundings, making Gifu a center of traditional Japanese culture and capturing the true spirit of Japan.

Through this newsletter, we hope that you will explore this wonderful prefecture, taking advantage of its natural beauty that offers many opportunities—particularly during the autumn season—to enrich yourself and experience something new!



Feature: Fruit Picking

Since 1961, people have been picking **pears** at the Yamanoue Orchard in Minokamo City, so why don't you have a hand at it and experience the sweetness of your hard-earned effort! To be on the safe side, you also might want to inquire about the state of the pears ahead of time. ¥600-¥1,000 based on age.

Season: From mid-August to October 11

Address: 1093-78 Yamanoue-cho, Minokamo City, GIFU 505-0003

Access: 5 min. by car from JR Takayama Mainline Kobi Station

Contact: +81-0574-25-4101

<http://www.yamanoue-kajitunokyo.or.jp/kankou.html> (Jpn.)

Yamanoue Kanko Orchard



Modani Farm



Enjoy picking and eating incredibly fresh, juicy **apples** at the Modani Farm, and even come back at a later date for a chance to pick a different kind of apple! All-you-can-eat is ¥800 for adults and ¥600 for children (there is an additional fee for taking apples home).

Season: mid-September though November

Address: 260 Kuguno, Kuguno-cho, Takayama City, GIFU 509-3205

Contact: +81-0577-52-3125

<http://modanifarm.com/> (Japanese)

Yamamoto Farm



Spread-out over hilly terrain is the vast Yamamoto Farm, where you can collect and eat as many **grapes** and **apples** as your stomach can take! And in addition to that, you can pick and take home up to 1kg of **chestnuts** (reservations required) to eat afterwards. ¥1,200 for adults (¥1,400 for chestnuts), ¥700 for older children (¥600 for apples), and ¥400 for young children

Season: early September – early October (mid-Nov. for apples)

Address: 1336-475 Ochiai, Nakatsugawa City, GIFU

Contact: +81-0573-69-3355

<http://n-kanko.jp/2011/06/post-309.html>

Autumn Foliage

Shinhotaka Ropeway

Look down at the beautiful fall colors of the Japanese alps from Japan's only double-decker gondola! And be sure to ride it to the highest station, as the view from there is rated 2-stars by the Michelin Green Guide Japan! Fall colors can be admired through late October.

Access: Nohi Bus towards Shinhotakaonsen departing from Takayama Station
<http://www.okuhi.jp/Rop/english.pdf>

Ena Gorge

Known for its cherry blossoms in the spring, Ena Gorge is also home to stunning autumn-colored maple leaves among the unique rock features that characterize the surrounding mountains. Taking a cruise around the river is also highly recommended, as that offers the most breathtaking view of the multi-colored cliffs. Best to go between late October and mid-November.

Access: Totetsu Bus towards Enakyo (on the Enakyo line) from JR Ena Station
http://www.tohsyoh.jp/ship/jet_e.html

Hakusan Super Rindo Forest Road

A toll road high up in the mountains that links Gifu to Ishikawa Prefecture, the Super Rindo is surrounded by the natural beauty of Mt. Hakusan. In the fall, the mountainside is lit ablaze with colourful leaves that are truly a sight to see.

Season: Best to go between early October and November 10

Contact: +81-076-256-7341

<http://www.hakusan-rindo.jp/contents/gaikoku/english.pdf>

Mt. Kinka

From the foot of the mountain at Gifu Park to the very top at Gifu Castle, colored maple leaves on and around Mt. Kinka are everywhere! And whether you choose to scale the mountain on foot or take the Mt. Kinka Ropeway, you are guaranteed a splendid view of the autumn scenery. Alternatively, taking a drive along the Kinka-zan Driveway is another great option.

Season: Prettiest in mid-late November

<http://www.kinkazan.co.jp/0000.htm> (Japanese)



Festivals & Events

18th Mino Washi Akari-Art Contest and Exhibition

Held every year in Mino City, this event features illuminated works of art made with the famed Mino Washi paper. It is meant to both honor the long history of this paper—considered one of Japan's finest—and create a connection between the art, the people who come from all over, and the city itself.

When: October 8 – 9; 5pm – 9pm Where: Udatsu no Agararu District, Mino City
<http://www.akariart.jp/> (Japanese)

Doburoku Festival

Every year, the residents of Shirakawa-go pray for a good harvest and give thanks for the previous year's crop during the Doburoku Festival. Residents and visitors to the village's shrines are given free *doburoku*, unrefined sake, during the festivities, and good times are had by all!

When: October 14 – 19 (for specific dates for each shrine, refer to link)

Doburoku drink fest: 3:30pm – 5pm

http://shirakawa-go.org/english/e_kyoudo.html

Takayama Festival

One of the three largest and most beautiful festivals in Japan, the Hachiman Festival held in Takayama City in the fall is famous for its large, intricately-decorated floats and superb puppet plays performed on stage. The artisanship of the city truly takes center-stage at this festival and wows the residents and visitors alike!

When: October 9 – 10

<http://www.hida.jp/e-kankou/e-maturi/e-maturi.htm>



Gifu Nobunaga Festival

One of the representative events of Gifu City, the Nobunaga Festival honors one of Japan's greatest and most popular figures, Oda Nobunaga. From colourful warriors' processions in the center of the city to musical band parades, this is a bustling event in Gifu's capital not to be missed!

When: October 1 – 2

Where: Downtown Gifu City

http://www.gifucvb.or.jp/en/02_event/02_06.html

Battle of Sekigahara Festival

A climactic battle that greatly determined the course of Japanese history in 1600, the Sekigahara Gassen still captures the imagination of many Japanese today. At this festival, there is a battle re-enactment, folk dancing, and even food that the victor, Tokugawa Ieyasu, ate on the day of the battle itself!

When: October 15 – 16

<http://www.kanko-sekigahara.jp/event/> (Japanese)

Seki Cutlery Festival

A city with more than 700 years of excellence in production of blades, Seki shows-off its artisans and their work during this exciting weekend. With the street as the showcase venue, you can watch swords being forged and polished, watch sword-unsheathing demonstrations, and even buy fine Seki cutlery for prices you will not be able to find anywhere else!

When: October 8 – 9

http://www.city.seki.gifu.jp/kankou/seki/hamono_maturi.htm (Japanese)

Local Kabuki

Gifu prides itself immensely on kabuki, a type of traditional Japanese theatre, performed by the locals themselves. It has its own traditions and is, overall, a more involved experience for everyone in attendance. A must-see in Gifu!

When: Through autumn

Where: The Tono region in Eastern Gifu

<http://jikabuki.com/> (Japanese)



Promotion #1: 'Time Slip' Back into the Edo Period!

What fits a historical city such as Takayama like traditional garb?! Step back in time by shedding your modern clothing, putting on a *kimono* or a *kamishimo*, and taking a stroll around the town. Those participating in the promotion receive free entry to 16 different tourist spots and facilities around Takayama as well as a commemorative photo capturing you in a different era! No *kimono*? No worries; they will be provided at the Takayama City Memorial Hall when you get there. ¥1,500 for 2 hours (and ¥500 for each additional 30 min.)

When: every weekend and holiday from September 10 to October 30

<http://www.hida.jp/event/timecapsule.html> (Japanese)

Contact: +81-0577-32-3333

Promotion #2: A Trip to Takayama Is More Convenient and Affordable than Ever!

Gifu Prefecture and the JR Central Japan Railway Company are teaming up to bring you an independent travel package to Takayama like no other! 3 nights in Takayama + 2 nights in Nagoya + Takayama⇌Nagoya train pass + Nagoya ⇌ Kyoto bullet train pass + much more! For more information:

<http://www.japanican.com/tours/tourdetail.aspx?tc=GMT01NG00VJSRTKA>

Thank you for reading and subscribing!

For questions, comments, or to unsubscribe, please contact c11334@pref.gifu.lg.jp.

For more on tourism in Gifu Prefecture, please refer to the following:

Gifu Crossroads Facebook Page

<http://www.facebook.com/pages/Gifu-Crossroads/165137586854382>

Gifu Tour Guide

<http://www.kankou-gifu.jp/en/index.html>

Chubu Wide-area Tourism Portal Site

<http://www.kandou10.jp/en/area/area05.html>

JNTO

<http://www.jnto.go.jp/>

Tourism and Local Products Promotion Division

Tourism Exchange Promotion Office

Department of Prefectural Policy Planning

2-1-1 Yabuta-minami, Gifu City, GIFU 500-8570



[TEL] +81-058-272-1111 (Ext. 3058)

[FAX] +81-058-278-2674

[E-mail] c11334@pref.gifu.lg.jp